



e-ISSN: 2319-8753 | p-ISSN: 2347-6710

IJIRSET

International Journal of Innovative Research in
SCIENCE | ENGINEERING | TECHNOLOGY



INTERNATIONAL JOURNAL OF INNOVATIVE RESEARCH

IN SCIENCE | ENGINEERING | TECHNOLOGY

Volume 11, Issue 6, June 2022

ISSN INTERNATIONAL
STANDARD
SERIAL
NUMBER
INDIA

Impact Factor: 8.118



9940 572 462



6381 907 438



ijirset@gmail.com



www.ijirset.com



Cotton Leaf Disease Detection using Deep Learning

Swathi C S¹, Swathi Patil², Yashaswini S N³, Sahana D V⁴, Mr.Naveen H M⁵

U.G. Student, Department of Computer Science & Engineering, Bapuji Institute of Engineering & Technology,
Davanagere, India^{1,2,3,4}

Assistant Professor, Department of Computer Science & Engineering, Bapuji Institute of Engineering & Technology,
Davanagere, India⁵

ABSTRACT: The detection of crop infection has greater technical importance like economically within agricultural industry. But to keep track of diseases in plants manually that is with the specialists leads to more expensive. Thus a model is required which mechanically identifies the diseases and thus the diseased plants leaves can be cured using prevention measurements. The aim of the model is to develop an application using Convolutional Neural Network (CNN), keras, tensor flow that acknowledges the cotton leaf diseases. To make this happen first we need to capture the image of leaf and then we will take a pixels from that image and then by applying Convolutional Neural Network we can predict whether cotton plant is diseased or not.

KEYWORDS: Convolution Neural Network, Crop, Disease.

I. INTRODUCTION

India is an agricultural based state as in keeping with the Observation India is a country where Major human beings rely on farming. Farmers has a great variety in multiplicity to select out appropriate vegetation for their farm. Anyhow, growing of this vegetation because of maximum harvest as well as fine producing are commonly technical. The sickness analysis is restrained by means of human visible talents due to the fact maximum of the number one signs are microscopic. This technique is tedious, time-consuming. Nowadays inside the location of research, a primary subject is an identity of the signs of the sickness by photo processing. The farmers are suffering at some point of their way of life for a manner to have an effect on the sickness of the cotton leaf. There a demand for a sickness analysis machine in order to aid farmers. This approach makes a speciality of sickness identity by means of processing obtained virtual pictures of leaves of the plant. The many paper we refer they use distinctive algorithms for sickness detection of leaf lots of use aid vector machine (SVM), synthetic neural network (ANN) so those all distinctive techniques use to stumble on sickness. The primary element or benefit Of our undertaking is we offer answer for sickness and deliver the statistics what insecticide or pesticides are appropriate to a particular Disease. It is also capable to assist users from forestall sickness through spreading along with vegetation deliver higher consequences while we deliver right remedy of those vegetation. The following pattern pictures from our dataset.

II. RELATED WORK

[1] Pranita P. Gulve, Sharayu S. Tambe, Madhu A. Pandey, Mrs S.S. Kanse This paper makes use of GLCM, thresholding, segmentation, characteristic extraction for detecting the illnesses. They create color transformation shape for the rgb leaf picture, follow color area transformation shape then picture is segmented. Unnecessary parts (inexperienced place) inside leaf place is removed. Calculate the feature functions for the segmented inflamed

object. Extracted functions are handed thru a pre-skilled neural community. Image is thinking about the assist of virtual digital digicam and all pix are saved in a JPEG format. Image resize and picture filtering is finished. Here filtering is critical to take away any noise content. For this they used gaussian low byskip clear out out is implemented and tremendous preferred deviation sigma. In this the classifier used is euclidian distance classifier. www.ijcrt.org © 2021 IJCRT | Volume 9, Issue 6 June 2021 | ISSN: 2320-2882 IJCRT2106528 International Journal of Creative Research Thoughts (IJCRT) www.ijcrt.org e498

[2] A. Jenifa, R. Ramalakshmi, V. Ramchandran In this paper makes use of convolution neural networks, deep neural networks, leaf sickness, category, picture processing. This education version includes 500 leaf pix and checking out version includes a hundred leaf pix. Cotton leaf illnesses to be categorized on this are - cercospora, bacterial blight, ascochyta blight, goal spot. Diseased cotton leaf taken as enter picture then enter picture transformed into gray transformed picture then the noise co-green picture, then it transformed into filtered picture, subsequent morphological picture then clustered picture the segmentation picture and subsequently the output picture takes out the diseased part. This machine indicates the 96% accuracy for the category of diseased cotton leaves.

[3] Rakesh Chaware, Rohit Karpe, Prithvi Pakhale, Prof. Smita Desai This machine discover 3 illnesses- aleternaria alternata, anthracnose and bacterial blight. This machine works parallel for healthful and defected leaf picture. Two pix has Been taken one for the healthful leaf different for the defected leaf. Disease detection begins offevolved from education system. In education system resizing of the healthful and defected picture has been finished. Then convert rgb to gray scale picture then follow stem, stairs, canny area detection, surf, entropy, warp pix. This approach is implemented on each the samples healthful in addition to defected. Once the education system of first segment samples is finished, contrast has been finished on the premise of values received for all of the parameters used.

[4] In this paper they are the usage of Crop Image, Agriculture picture Processing, Image segmentation, Histogram Equalization. They divide the illnesses in the following 3 categories: Bacterial sickness, fungal illnesses, viral sickness. The picture processing approach is hired to identify illnesses correctly. The processing scheme includes picture acquisition thru digital digicam or web, picture pre-processing consists of picture enhancement and picture segmentation in which pretentious along with beneficial regions get segment, characteristic extrication together with category. Atlast a disease for that particular plant will be detected .In characteristic extrication, they're the usage of the K-imply clustering set of rules technique for category and Neural-community as recognizer. The step- through-step manner is proven as below. 1) RGB picture acquisition 2) Pre-processing of picture the usage of HEQ 3) Rescaling a picture 4) K-means to make picture separation 5) Estimating functions extrication 6) Categorizing and Identifying the usage of CNN. Studyfor illness of the diseased cotton leaves done through the usage of the picture processing toolbox and additionally it advise vital treatments for that sickness springing up at the leaf of a cotton plant. The correct reputation for the usage of K- Means clustering technique the Euclidean distance is 89.56% and the execution time for K-Means clustering technique the usage of Euclidean distance is 436.ninety five 2d and additionally thresholding is finished through a dynamical span [0,1] relying shadeation depthby the leaf picture. Hence that sickness detection the usage of K-Mean Clustering technique the usage of Euclidean distance was a terrific strategies for sickness identification in leaf.

[5] This machine includes parts: 1) virtual picture evaluation and characteristic extraction of pattern cotton leaf 2) to put into effect the returned propagation synthetic neural community in system learning. This system has the subsequent 5 steps- Image acquisition, Image Pre-processing, Image enhancement, Image segmentation and Feature extraction. To classify the fine of cotton leaf illnesses, the Artificial Neural Network device of MATLAB is used. This fine identity is finished primarily based totally at the RGB and HSV additives of the picture. This ANN device works on neurons, neurons are in addition related to hidden layers of neurons. The ANN device additionally has a returned-propagation system. The prediction of the final results is taken randomly through the neural community system. The benefit of this technique is it may expect the facts effectively with minimized error. This technique turned into capable of locate cotton leaf without or with defects from the picture.

III. METHODOLOGY

We suggest an method for CNN approach which makes use of distinct photograph processing set of rules along side ML approach has been applied in automated identification along with type of diseased plant leaves. Digital digicam or comparable gadgets are used to take snap shots of leaves of various types, after which the ones are used to pick out the affected region in leaves. Then distinct sorts of photograph processing strategies are implemented on them, to method

the ones snap shots, to get distinct and beneficial capabilities wanted for the cause of reading later.

- 1) **Image Pre-Processing:** In these steps, we want higher decision snap shots and with higher quality. All those snap shots are resized with precise way and decision. These snap shots we cast off noise content material and rotate the snap shots the use of a information augmentation method.
- 2) **Image Segmentation:** Image Segmentation is method of separating a virtual photograph to numerous segments. It is used to cast off some areas of pixel of inflamed leaves and effortlessly diagnosed a version whose element's are inflamed.

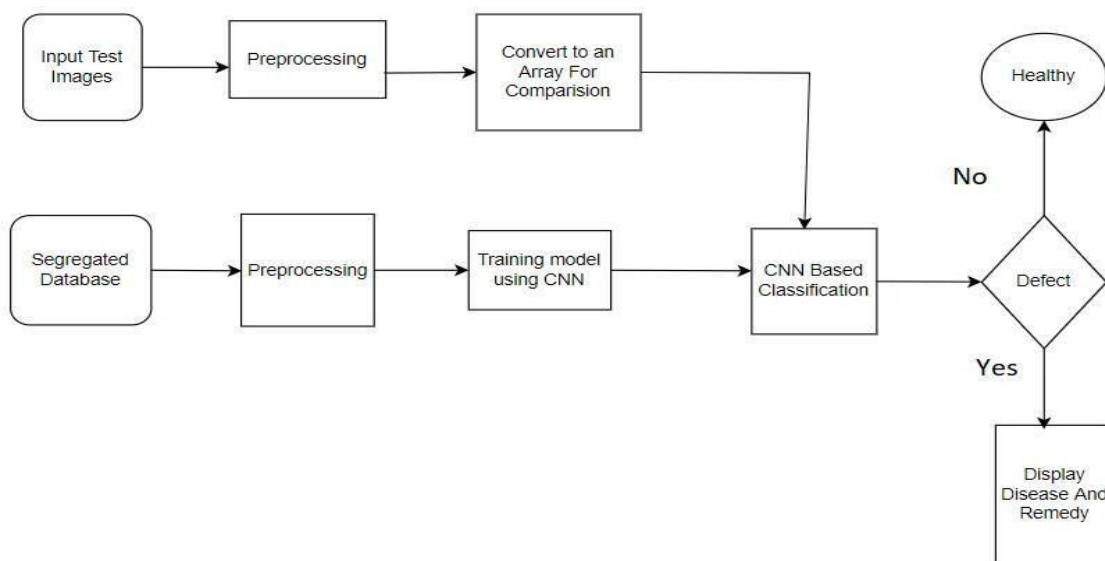
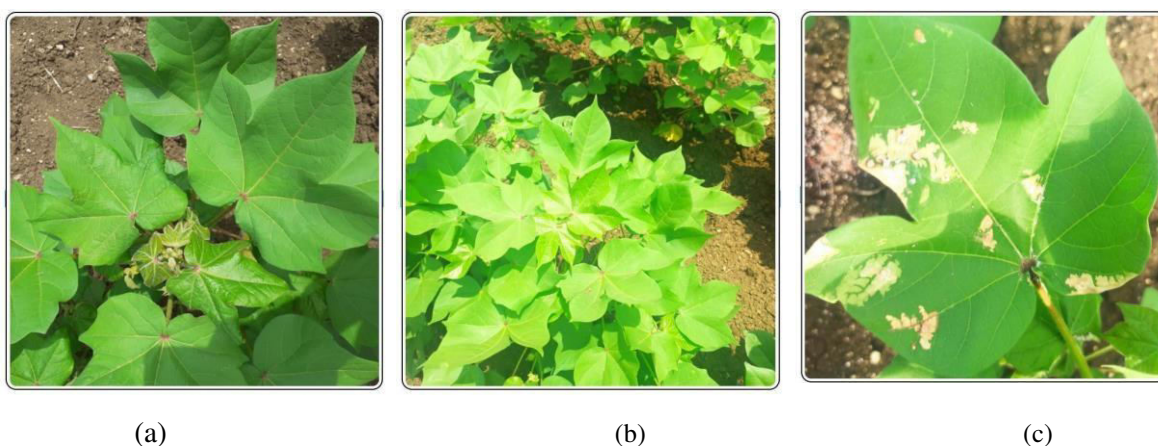


Figure 1: System Architecture

- 3) **Feature Extraction:** In the process of feature extraction, we gather a number of vital capabilities of diseased leaves, which has a capability of creating a coloured shape and transfer these shadeation fee out from the RGB additives of the defected components of Cotton leaves images. From these characteristics users are able to apply to educate the Neural Network. After these tactics were executed we can then provide these to educate as well as take a look at records into this version as well as follow this Convolutional Neural Network Architecture. Below is the given Flowchart which describes the working of version.

VI. EXPERIMENTAL RESULTS



The plant in Figure (a) is diseased plant, which is detected by our algorithm. It seems to be a healthy plant by its appearance but in reality it's not a healthy plant. With the help of trained dataset algorithm scrutinizes the plant's leaves picture and it provides accurate results.

The plants in Figure (b) and (c) are healthy plants. Although the plant in figure (c) seems to be unhealthy but actually it is a healthy plant. The marks are due to the chemical fertilizer which is fallen on leaves by mistake leading to make these marks on leaves.

V. CONCLUSION

Crop disease identification for cotton leaves has been successfully implemented which is a web-based system using Convolutional Neural Network. The diseases are identified successfully by the model with 80% accuracy in training using the training dataset which consists of 141 images for each disease. Convolutional Neural Network consists of three hidden layers which identifies the cotton leaf diseases images. The model takes the input image from the user successfully and provides input in the form of diseases identified, prevention measurements, correction measurements, required pesticides and probable cost for required pesticides. Other diseases can also be included for identification. The model can also have hardware implementation using IOT for image capturing in fields. The web interface can also include a forum which helps farmers to discuss about current trends they are facing in variety of diseases.

REFERENCES

- [1] S. Jia, Y. Hou, Y. Shi et al., "Attention-based graph ResNet for motor intent detection from raw EEG signals," arXiv preprint arXiv:2007.13484, 2021.
- [2] M. Zhang, J. Li, Y. Li, and R. Xu, "Deep learning for short term voltage stability assessment of power system," IEEE Access, vol. 99, 2021.
- [3] L. Yang, S. Yi, N. Zeng, Y. Liu, and Y. Zhang, "Identification of rice diseases using deep convolutional neural networks," Neurocomputing, vol. 276, no. 1, pp. 378–384, 2020.
- [4] S. Arivazhagan and S. VinethLigi, "Mango leaf diseases identification using convolutional neural network," International Journal of Pure and Applied Mathematics, vol. 120, pp. 11067–11079, 2020.
- [5] D. S. R. G. Pawan and P. Warne, "Detection of diseases on cotton leaves using K-mean clustering method," International Research Journal of Engineering and Technology, vol. 2, no. 4, pp. 426–428, 2020.
- [6] J. Amara, B. Bouaziz, and A. Algergawy, "A deep learning-based approach for banana leaf diseases classification," in Proceedings of Datenbanksysteme für Business, Technologie und Web (BTW 2017), pp. 80–89, Stuttgart, Germany, March 2020.
- [7] Mr. Chandrakant Deelip Kokane et al (2020) "To Detect and Identify Cotton leaf disease based on pattern recognition technique" Department of Computer Engineering, MCERC, Nashik, Maharashtra, India Author Vol-3 Issue-4 2020.
- [8] Badage, Anuradha., Crop Disease Detection using Machine Learning: Indian Agriculture. IRJETV (2020).
- [9] Khirade, Sachin D., and A. B. Patil., Plant disease detection using image processing, International conference on computing communication control and automation, IEEE (2020).
- [10] O. I. e. Inga Hilbert, "The cotton supply chain in Ethiopia," Freiburg, vol. 38, 2020.
- [11] A. R. Hevner, S. T. March, J. Park, and S. Ram, "Design Science in IS Research," Management Information, vol. 28, pp. 75–105, 2020.
- [12] M. A. Schwemmer, N. D. Skomrock, P. B. Sederberg et al., "Meeting brain-computer interface user performance expectations using a deep neural network decoding framework," Nature Medicine, vol. 24, no. 11, pp. 1669–1676, 2019.
- [13] J. G. A. Barbedo, "Factors influencing the use of deep learning for plant disease recognition," Biosyst. Eng., vol. 172, pp. 84–91, Aug. 2019.
- [14] G. L. Grinblat, L. C. Uzal, M. G. Larese, and P. M. Granitto, "Deep learning for plant identification using vein morphological patterns," Comput. Electron. Agricult., vol. 127, pp. 418–424, Sep. 2019.
- [15] J. G. A. Barbedo, "Plant disease identification from individual lesions and spots using deep learning," Biosyst. Eng., vol. 180, pp. 96–107, Apr. 2019.
- [16] S. H. Lee, H. Goëau, P. Bonnet, and A. Joly, "New perspectives on plant disease characterization based on deep learning," Comput. Electron. Agricult., vol. 170, Mar. 2020, Art. no. 105220.
- [17] C. Bi, J. Wang, Y. Duan, B. Fu, J.-R. Kang, and Y. Shi, "MobileNet based apple leaf diseases identification," Mobile Netw. Appl., vol. 10, pp. 1–9, Aug. 2020, doi: 10.1007/s11036-020-01640-1.



- [18] A. Picon, A. Alvarez-Gila, M. Seitz, A. Ortiz-Barredo, J. Echazarra, and A. Johannes, “Deep convolutional neural networks for mobile capture device-based crop disease classification in the wild,” *Comput. Electron. Agricult.*, vol. 161, pp. 280–290, Jun. 2019.
- [19] S. Chouhan, A. Kaul, U. Singh, S. Jain, “Bacterial foraging optimization based Radial Basis Function Neural Network (BRBFNN) for identification and classification of plant leaf diseases: An automatic approach towards Plant Pathology”, 2019.
- [20] M. W. Tahir, N. A. Zaidi, A. A. Rao, R. Blank, M. J. Vellekoop and W. Lang "A Fungus Spores Dataset and a Convolutional Neural Networks based Approach for Fungus Detection", *IEEE TRANSACTION ON NANOBIOSCIENCE*, MAY 2019
- [21] Ranjith, S. Anas, I. Badhusha, Zaheema OT, Faseela K, M. Shelly "Cloud Based Automated Irrigation And Plant Leaf Disease Detection System Using An Android Application", *International Conference on Electronics, Communication and Aerospace Technology ICECA 2019*.
- [22] A. A. Sarangdhar, Prof. Dr. V. R. Pawar "Machine Learning Regression Technique for Cotton Leaf Disease Detection and Controlling using IoT", *International Conference on Electronics, Communication and Aerospace Technology ICECA 2019*.
- [23] Pranita P. Gulve, Sharayu S. Tambe, Madhu A. Pandey, Mrs S.S.Kanse, “Leaf Disease Detection of Cotton Plant Using Image Processing Technique”, *IOSR Journal of Electronics and Communication Engineering (IOSR-JECE)* e-ISSN: 2278-2834, p-ISSN: 2278-8735. PP 50-54 ,2019
- [24] Vijay S. Bhong, B.V. Pawar, “Study and Analysis of Cotton Leaf Disease Detection Using Image Processing”, *International Journal of Advanced Research in Science, Engineering and Technology*, ISSN: 2350-0328, Vol. 3, Issue 2, February 2019
- [25] A. jenifa, R. Ramalakshmi, V. Ramachandran, “Classification of cotton leaf Disease using Multi-Support Vector Machine”, 978-1-5386-9543-2/19/\$31.00 ©2019 IEEE
- [26] B. Cheng and E. T. Matson, -A feature-based machine learning agent for automatic rice and weed discrimination, *Lect. Notes Artif. Intell. (Subseries Lect. Notes Comput. Sci.*, vol. 9119, no. September 2019, pp. 517–527, 2019.
- [27] S. P. Patil and R. SZambre, -Classification of Cotton Leaf Spot Disease Using Support Vector Machine, *J. Eng. Res. Appl.* www.ijera.com, vol. 4, no. 5, pp. 92–97, 2019.
- [28] M. S. Al-Tarawneh, -An empirical investigation of olive leave spot disease using autocropping segmentation and fuzzy Cmeans classification, *World Appl. Sci. J.*, vol. 23, no. 9, pp. 1207–1211, 2019.



INNO SPACE
SJIF Scientific Journal Impact Factor
Impact Factor: 8.118



ISSN INTERNATIONAL
STANDARD
SERIAL
NUMBER
INDIA



INTERNATIONAL JOURNAL OF INNOVATIVE RESEARCH

IN SCIENCE | ENGINEERING | TECHNOLOGY

 **9940 572 462**  **6381 907 438**  **ijirset@gmail.com**



www.ijirset.com

Scan to save the contact details